



Mount Yard, Old Mount Street, Manchester

£1,450 PCM

Ascend Properties are delighted to offer this fantastic two bedroom, two bathroom, furnished apartment in the extremely popular and brand new Mount Yard, Meadowside development.

Situated in one of Manchester's most sought after locations, Mount Yard is a stunning development overlooking Angel Meadow Park, the largest green space in Manchester's City Centre, meaning you get the best views around. This development offers a wide array of amenities and facilities to benefit their residents. You will have the full use of facilities such as a gymnasium, residents lounge and communal terrace.

Being within the M4 area, you are surrounded by a plethora of trendy bars, restaurants, boutiques and art galleries so you'll never be short of things to do, places to see, or food to eat.

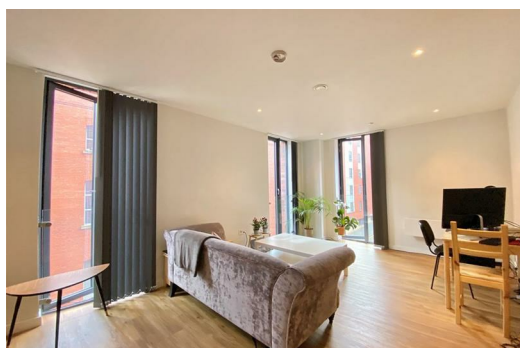
These homes have been completed to a high specification, are furnished to a high standard through-out and they benefit from a range of high specification fixtures and fittings.

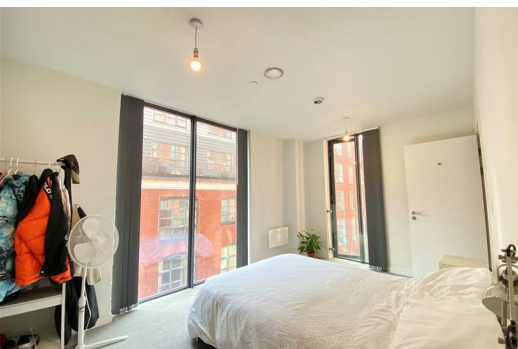
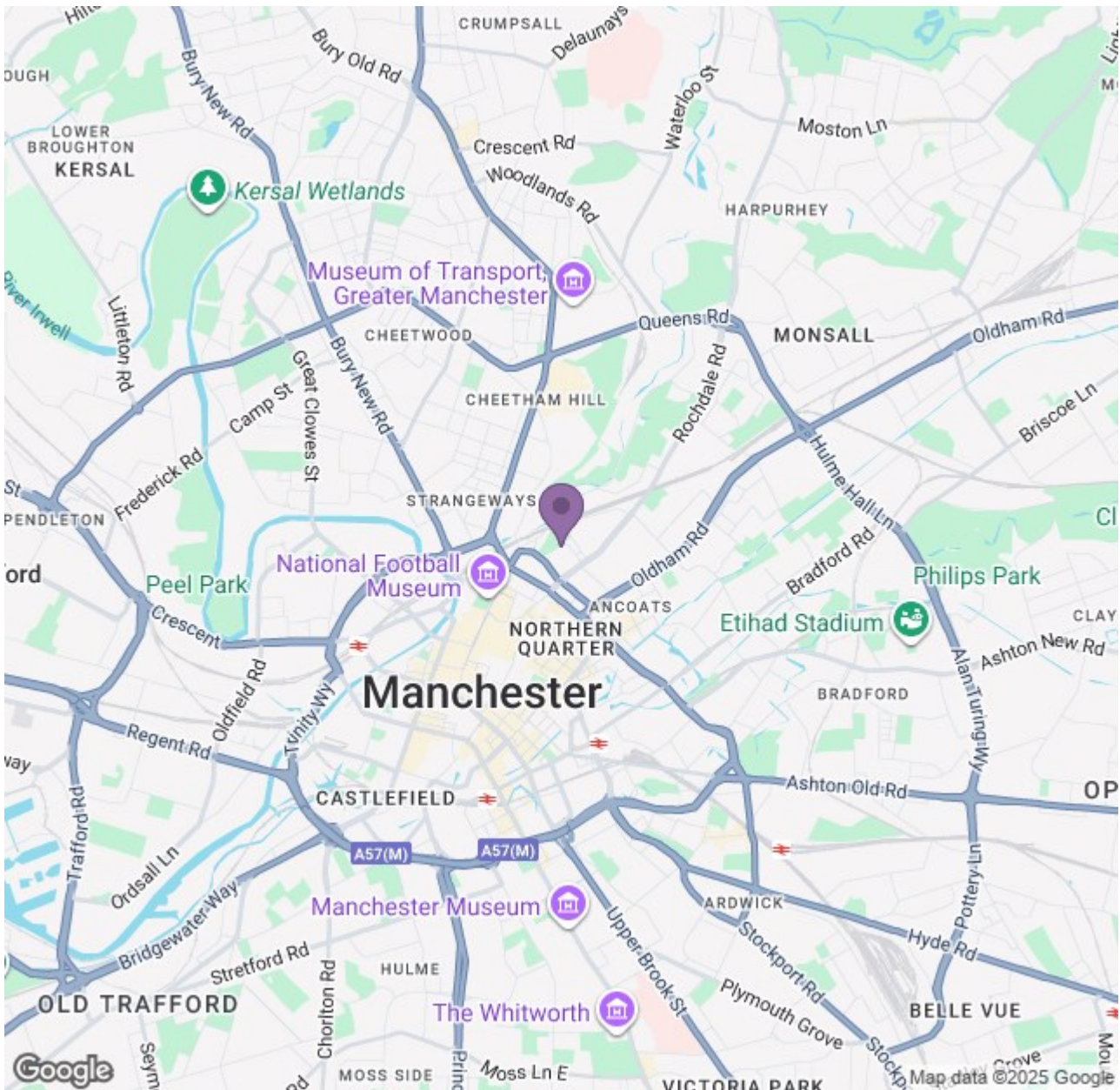
Available 6th January 2026

Deposit: £1,670

Council Tax Band : D

12 Month Tenancy





Energy Efficiency Rating		Environmental Impact (CO ₂) Rating	
Band	Score	Band	Score
A	89-92	A	1-3
B	81-88	B	4-6
C	69-80	C	7-9
D	62-68	D	10-12
E	55-61	E	13-15
F	49-54	F	16-18
G	41-48	G	19-21
England & Wales	82	England & Wales	10